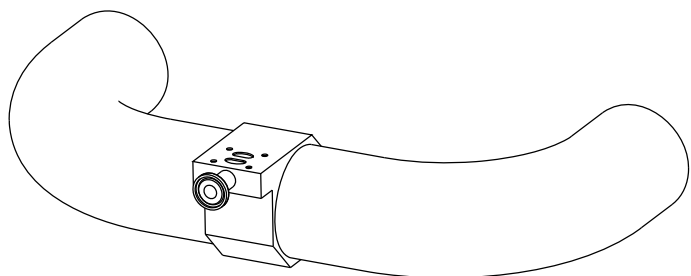
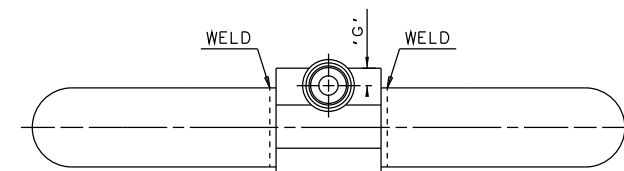
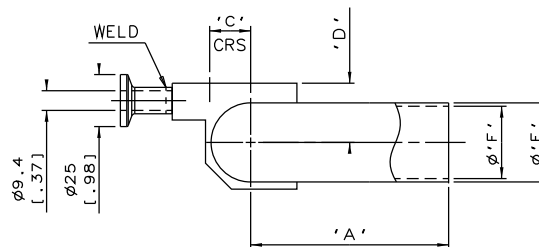
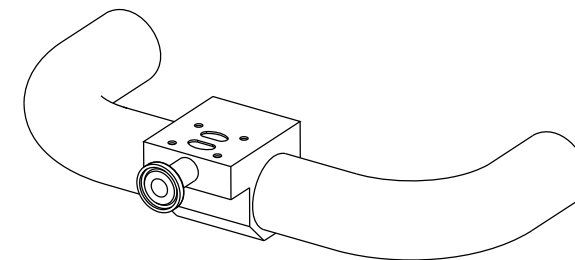
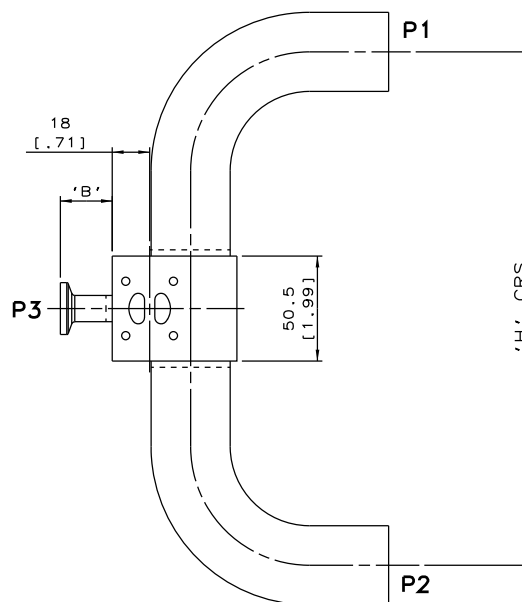


DN15/0.50  
MAINLINE ONLY



DN80/3.00 TO DN100/4.00  
MAINLINE ONLY

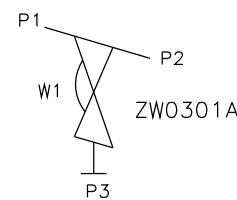


DN20/0.75 TO DN65/2.50  
MAINLINE ONLY

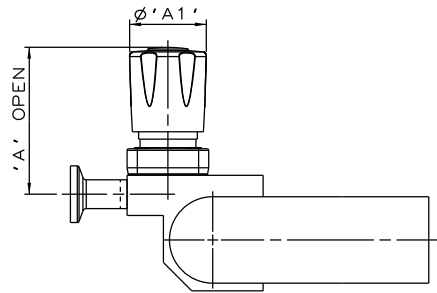
The information on this sheet is Private and Confidential and is the property of Crane Process Flow Technologies Limited and must not be published directly or indirectly in any manner whatsoever without the written permission of the Company and must not be used in any way detrimental to their interests.  
© Crane Process Flow Technologies

<b>CRANE</b> Process Flow Technologies A Crane Co. Company	<b>Saunders</b> The Science Inside
Title SCHEDULE OF LEADING DIMENSIONS FOR DN8/0.25 WEIR POINT OF USE 'T' BODY COMPLETE WITH : MAINLINE : BUTT WELD OD TUBE ENDS BRANCH : DN15/0.50 HYGIENIC CLAMP END	
Drawn RI	Date 14.10.11
Checked RND	Date 21.03.12
UNCONTROLLED IN HARD COPY FORMAT	Drawing No. WEB-41
First Angle Projection Method E	DO NOT SCALE
Issue. 2	

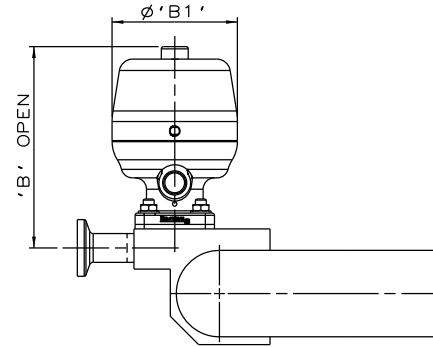
MAINLINE SIZE		A		B		C		D		øE		øF		G		H		BODY WEIGHT Kgs
mm	inch	mm	inch	mm	inch	mm	inch	mm	inch	mm	inch	mm	inch	mm	inch	mm	inch	
DN15	0.50	76.2	3.00	25.0	0.98	7.2	0.28	16.5	0.65	12.7	0.50	9.4	0.37	8.4	0.33	208.9	8.22	0.5
DN20	0.75	76.2	3.00	25.0	0.98	10.2	0.40	21.0	0.83	19.05	0.75	15.75	0.62	8.4	0.33	208.9	8.22	0.6
DN25	1.00	76.2	3.00	25.0	0.98	13.4	0.53	24.0	0.94	25.4	1.00	22.1	0.87	9.4	0.37	208.9	8.22	0.8
DN40	1.50	95.3	3.75	25.0	0.98	19.7	0.78	29.0	1.14	38.1	1.50	34.8	1.37	8.4	0.33	247.1	9.73	1.1
DN50	2.00	120.7	4.75	25.0	0.98	26.8	1.06	32.0	1.26	50.8	2.00	47.5	1.87	9.4	0.37	297.9	11.73	1.9
DN65	2.50	139.8	5.50	25.0	0.98	32.6	1.28	36.0	1.42	63.5	2.50	60.2	2.37	8.4	0.33	336.1	13.23	2.1
DN80	3.00	158.8	6.25	25.0	0.98	38.8	1.53	40.0	1.57	76.2	3.00	72.9	2.87	8.4	0.33	388.1	15.28	2.4
DN100	4.00	203.2	8.00	25.0	0.98	51.3	2.02	53.8	2.12	101.6	4.00	97.38	3.84	8.4	0.33	476.9	18.78	4.8



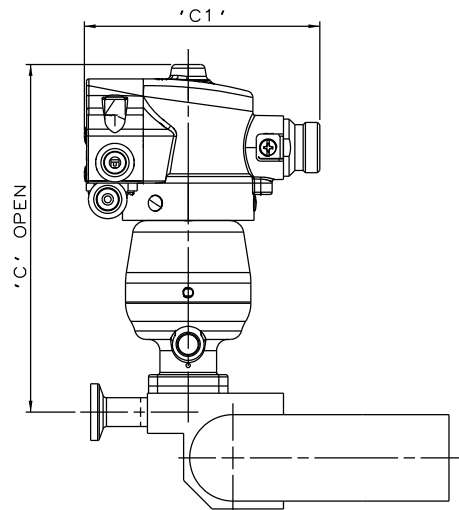
ORIENTATION AS  
PER P&ID DIAGRAM  
FOR OPTIMUM  
DRAINABILITY.



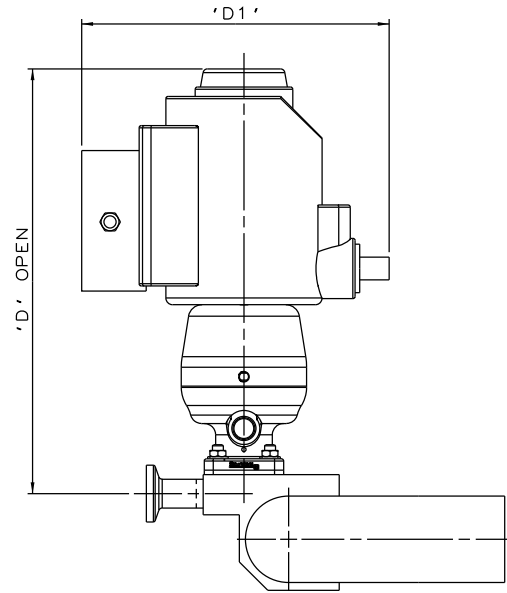
PURE PERFORMANCE  
BONNET ASSEMBLY



\*S360 ACTUATOR



\*S360 ACTUATOR  
WITH M-VUE SENSOR



\*S360 ACTUATOR  
WITH I-VUE SENSOR

The information on this sheet is Private and Confidential and is the property of Crane Process Flow Technologies Limited and must not be published directly or indirectly in any manner whatsoever without the written permission of the Company and must not be used in any way detrimental to their interests.

© Crane Process Flow Technologies

**CRANE** Process Flow Technologies  
A Crane Co. Company

**Saunders**  
The Science Inside

Title  
SCHEDULE OF LEADING DIMENSIONS FOR DN8/0.25 WEIR  
'T' BODY (DN15/0.75 BRANCH) WITH MAINLINE BUTT WELD  
OD TUBE ENDS, BRANCH TRI-CLAMP END.  
FITTED WITH TOPWORKS OPTIONS

Drawn R1 Date 28.06.16 UNCONTROLLED IN  
Checked RND Date 28.06.16 HARD COPY FORMAT

First Angle Projection  DO NOT SCALE Drawing No. WEB-041-ASSY Issue. 1

\* DIMENSIONS SHOW MAXIMUM ENVELOPE FOR ALL MODES

BRANCH SIZE		A		A1		B		B1		C		C1		D		D1	
mm	inch	mm	inch	mm	inch	mm	inch	mm	inch	mm	inch	mm	inch	mm	inch	mm	inch
DN15	0.50	65.8	2.59	34.0	1.34	89.4	3.52	55.0	2.18	154.4	6.08	103.8	4.09	188.4	7.42	71.5	2.81