



LARGE DIAMETER LINED PIPING UP TO 72" & COMPLEX SHAPES UP TO 161"

Key features Include:

- 1 Mechanically bonded seamless liners
- 2 Excellent chemical and abrasion resistance
- 3 Liner thickness ranging from 0.125" – 0.450"
- 4 Diameter up to 72" pipe lengths up to 20 ft
- 5 Large diameter vessel lining up to 6000 gallons
- 6 Single piece complex shapes

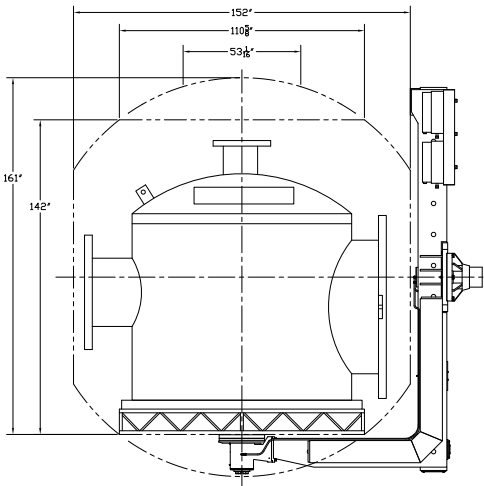


ROTOmax Large Diameter Equipment

Liner Materials	Standards	Applications	Standard Pipe & Fittings	Special Pipe & Fittings
Polypropylene (225°F)	ASME B31.1 and B31.3	Seawater for Cooling	Pipe up to 20 ft. Lengths	Complex Shapes
ETFE (300°F)	ASME B16.5 and B16.47	Waste Water Collection and Treatment	45 and 90 Degree Elbows	Manifolds
HDPE (180°F)	ASME B16.9	Brackish Water	Special Angle Elbows	Vessels
	ASTM F1545-15a	Condenser Water Recirculation	Concentric Reducers	Columns
		River or Well Water	Equal and Reducing Tees	Tanks
		Demineralized Water	Crosses	Reactors
		Oily Water / Drain Lines	Reducing Elbows	Knock Out Pot
		FGD Slurry Pipelines and Lime Injection	Eccentric Reducers	Filter Housing
		Brine	Reducing Filler Flanges	Basket Strainers
		Acids:	Instrument Tees	
		- Sulfuric	Custom Elbows	
		- Hydrofluoric		
		- Hydrochloric		
		- Nitric		
		- Phosphoric		
		SO2 Scrubber Columns		
		H2S Stripper		
		Ultrapure Systems		

Rotational Lining is Well-Suited to Large Diameter Pipes and Fittings as well as Custom Configurations

Melt-processable resins such as ETFE (ethylene tetrafluoroethylene), PP (polypropylene), and HDPE (high-density polyethylene), in conjunction with rotational lining, allows RESISTOFLEX® freedom in producing lined steel piping products with custom or complex shapes. These products are made with the same excellent RESISTOFLEX® quality the industry has come to expect. This comes at a lower price than expensive metal alloys and with features that are superior to sheet lining and coating solutions.



Rock N' Roll Machine Parameters	
Total Weight*	11,000 lbs
Max Height	76"
Max Length	260"
Max Diameter	82"
*weight includes tooling	

Shuttle Offset Arm Parameters	
Max Width	Max Length
52"	157"
74"	153"
88"	149"
102"	145"
110"	142"
150"	119"
Total Weight*	6,000 lbs
*weight includes tooling	

Shuttle Straight Arm Parameters	
Max Width	Max Length
32"	82"
72"	79"
94"	70"
112"	64"
126"	55"
136"	52"
146"	46"
154"	40"
160"	34"
Total Weight*	8,000 lbs
*weight includes tooling	

*Ask pipe doctor @cranecpe.com

One Quality Way
Marion, NC
28752, U.S.A
Tel.: 1 (828) 724-4000

Crane Co., and its subsidiaries cannot accept responsibility for possible errors in catalogues, brochures, other printed materials, and website information. Crane Co. reserves the right to alter its products without notice, including products already on order provided that such alteration can be made without changes being necessary in specifications already agreed. All trademarks in this material are the property of the Crane Co. or its subsidiaries. The Crane and Crane brands logotype (CENTER LINE®, COMPAC-NOZ®, CRANE®, DEPA® & ELRO®, DOPAK®, DUO-CHEK®, FLOWSEAL®, GYROLOK®, GO REGULATOR®, HOKE®, JENKINS®, KROMBACH®, NOZ-CHEK®, PACIFIC VALVES®, RESISTOFLEX®, REVO®, SAUNDERS®, STOCKHAM®, TEXAS SAMPLING®, TRIANGLE®, UNI-CHEK®, VALVES®, WESTLOCK CONTROLS®, WTA®, and XOMOX®) are registered trademarks of Crane Co. All rights reserved.