

XOMOX®



SEAL
THE FUTURE.

LINED BUTTERFLY VALVES SERIES XLD

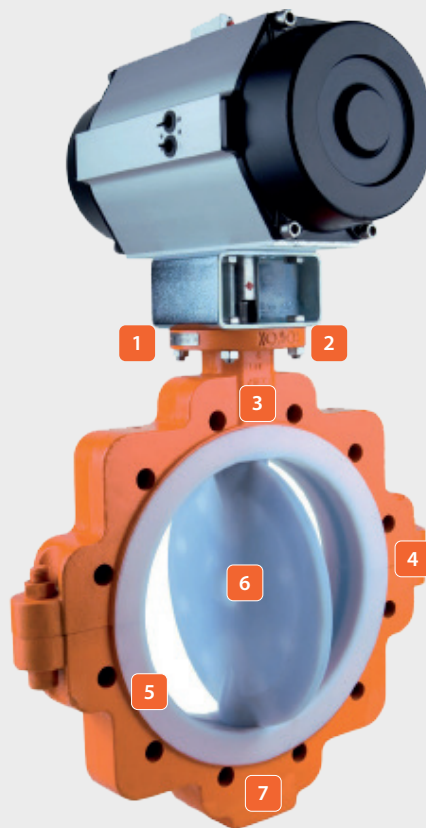
CRANE

www.cranecpe.com

Lined Butterfly Valves Performance

**We listened to our most demanding critics: Our customers.
Here's our response!**

**Lower Emissions ISO
15848-1 BH C03 SSA0/
TA-LUFT 2021
Compliant**



- | | | | |
|----------|---|----------|---|
| 1 | Lower Torque Ratings
enable the use of smaller, less expensive actuators | 4 | Better Atmospheric Corrosion Resistance
through high-end surface coating. |
| 2 | ISO 5211 Mounting Pad
Allows the option of bracket or direct mounting of operators. Direct mounting ensures robust performance while providing compact system design. | 5 | A wide Sealing Face
prevents leakage at the flange |
| 3 | The Seal to Atmosphere
is assured by using the triple FKM O-rings around the base of the shaft | 6 | Improved Disc Design
assures better stability |
| | | 6 | Materials
Body and Disc in EN-JS1049 / ASTM A395 Ductile Iron, PFA / Teflon® Lined. |

Lined Butterfly Valves Product Overview

Materials

Body and Disc in EN-JS1049 / ASTM A395 Ductile Iron, PFA / Teflon® Lined.

Pressure Range

Suitable for vacuum service (0.02 psi/1,33 hPa)
Shut-off Pressure max. 150 psi/10 bar

Temperature Range

-20° C to 200° C
253 K to 473 K
-4° F to 392° F

Applications

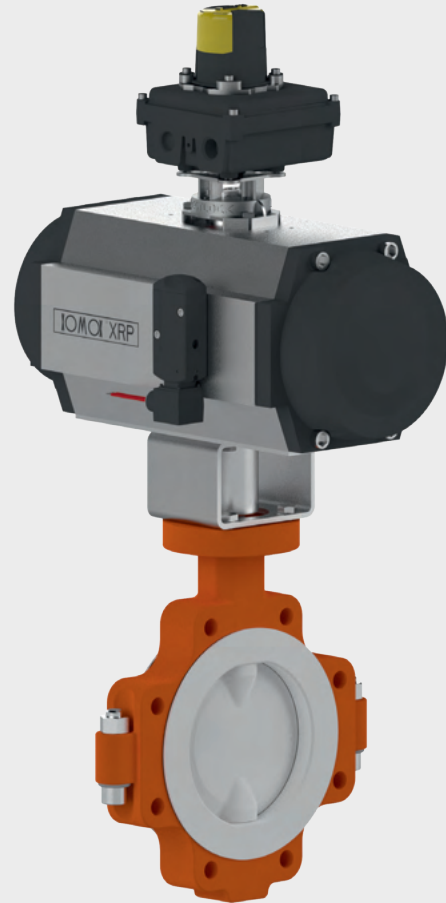
XLD valves offer economical solutions for the vast majority of chemical applications while maintaining the highest possible degree of performance in terms of in-line leakage and fugitive emissions.

They are commonly used within the following industries:

- Chlor-Alkali
- Industrial Inorganic Chemicals
- Metal and Mining
- Pharmaceutical
- Nitrogen and Phosphatic Fertilizers
- Petroleum Refining

Within these industries, XLD valves have superior performance in the following applications

- Chlorine
- Brine
- Benzene
- Bromine
- Sulfuric Acid
- Nitric Acid
- Hydrochloric Acid
- Phosphoric Acid
- Sea Water



XLD11 6" wafer with Gear

Visit our website, www.cranecpe.com, to view these and other lined products, applications, brochures, certification, documents and more.

Lined Butterfly Valves Applications

Function	On / Off	●
	Throttling	●
	Diversion	●
Media Type	Clean Liquids & Gases	●
	Dirty Liquids & Gases	●
	Corrosive Liquids & Gases	●
	Hazardous Liquids & Gases	●
	Viscous Liquids	●
	Scaling Liquids & Slurries	●
	Abrasive Slurries	●
	Fibrous Slurries	●
	Dry Materials	●
	Vacuum Service	●
Application Requirements	High Flow Capacity	●
	Low Torque	●
	Fugitive Emissions Control	●
	Reduced Maintenance	●
	Extended Service Life	●
	Sizes	2" - 24" DN50 - DN600
	Pressure Ratings	Class 150 / PN10 PN 20
	High Temperature (ASME/EN)	392°F/200°C
	Low Temperature (EN)	14°F/-10°C
	Low Temperature (ASME)	-4°F/-20°C
	Key Benefit	Safety / Economy

● Superior Performance

● Limited Application


● Not Applicable

Source: CRANE Engineering

Lined Butterfly Valves Features & Benefits


Compliant to ISO 15848-1 BH CO3 SSAO RT - 200C & TA-Luft 2021
Less than 20 PPM emissions - CO3 = 2500 Mechanical cycles; 4 Thermal Cycles - 0 Adjustments

1



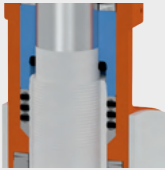
THREE SEALING ELEMENTS
The XLD valve features a ROBUST THREE-INDEPENDENT STEM SEALING SYSTEM - exceeding the industry norm of two ensuring exceptional sealing performance to the atmosphere, especially under thermal stress.

4




ADJUSTABLE LIVE LOADED DESIGN
Only valve in market with adjustable cover option.

5




LONGEVITY
Replaced metal bearing with an INNOVATIVE FLUOROPOLYMER BEARING, therein eliminating corrosion and seizure of stem in harsh environments.

2




IMPROVED IN LINE SEAL
Primary seal ring upgraded from rubber to chemical compatible metal ring with washer spring support. This EXTENDS THE CYCLE LIFE of the valve and improves the inline seal.

6




BREAK-AWAY TORQUE REDUCTION
Optimized back-up ring geometry eliminates potential pinch points therefore DELIVERING LOWER AND CONSISTENT BREAK-AWAY TORQUE.

3



CLOSED BOTTOM DESIGN
Our unique closed-bottom design ELEMİNATES SECOND POTENTIAL LEAK PATH. This feature significantly lowers the probability of valve leakage to the atmosphere and ensuring the highest-degree of protection against corrosion.



Configurations & Sizes

XLD Series	Body Pattern	Flange	Pressure Class	DN	50	65	80	100	150	200	250	300
				Inch	2"	2.5"	3"	4"	6"	8"	10"	12"
XLD 11	EN-JS1049/ASTM 395 WAFER	ANSI	150		PFA lined disc / PFA liner							
XLD 12		DIN	PN10/16		PFA lined disc / PFA liner							
XLD 13		JIS	JIS 10K		PFA lined disc / PFA liner							
XLD 21	EN-JS1049/ASTM 395 LUG	ANSI	150		PFA lined disc / PFA liner							
XLD 22		DIN	PN10/16		PFA lined disc / PFA liner							
XLD 23		JIS	JIS 10K		PFA lined disc / PFA liner							

Lined Products

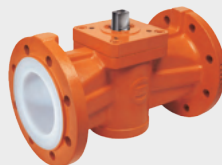
LINED PLUG VALVES



Stainless Steel Lined Plug Valves



3 Way Lined Plug Valves



Lined Plug Valve with ISO 5211 Mounting



Lined Plug Valves, PN 16, Class 150 and 300

LINED CHECK VALVES



Y Pattern Ball Check Valves



Vertical and Horizontal Poppet Check Valves



Spring Assisted Check Valves



Swing Check Valves

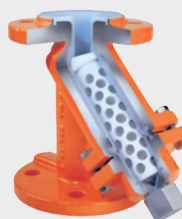
LINED ACCESSORIES



Fully Lined Sampling Valves



Fully Lined Sight Glass



Fully Lined Strainer and Filters



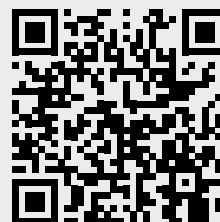
In-line Ball Check Valves

LINED BALL VALVES



XLB Lined Ball Valves

Visit our website www.cranecpe.com for additional product info.



Notes

[illegible]

CRANE®

CRANE CHEMPHARMA & ENERGY

Xomox International GmbH & Co.OHG
Von-Behring-Straße 15
88131 Lindau (Bodensee)
Germany
Tel.: +49 8382 702-0

Xomox Corp.
4444 Cooper Road,
Cincinnati, OH 45242
USA
Tel.: (513) 745-6000

Crane Company, and its subsidiaries cannot accept responsibility for possible errors in catalogues, brochures, other printed materials, and website information. Crane Company reserves the right to alter its products without notice, including products already on order provided that such alteration can be made without changes being necessary in specifications already agreed. All trademarks in this material are the property of the Crane Company or its subsidiaries. The Crane and Crane brands logotype (ALOYCO®, BAUM®, CENTER LINE®, CRANE®, CRYOWORKS®, DEPA® & ELRO®, DOPAK®, DUO-CHEK®, FLOWSEAL®, GYROLOK®, GO REGULATOR®, HOKE®, JENKINS®, KROMBACH®, NOZ-CHEK®, PACIFIC®, RESISTOFLEX®, XOMOX®, SAUNDERS®, STOCKHAM®, TECHNIFAB®, TEXAS SAMPLING®, WESTLOCK CONTROLS®, WTA®, and XOMOX®) are registered trademarks of Crane Company. All rights reserved.
