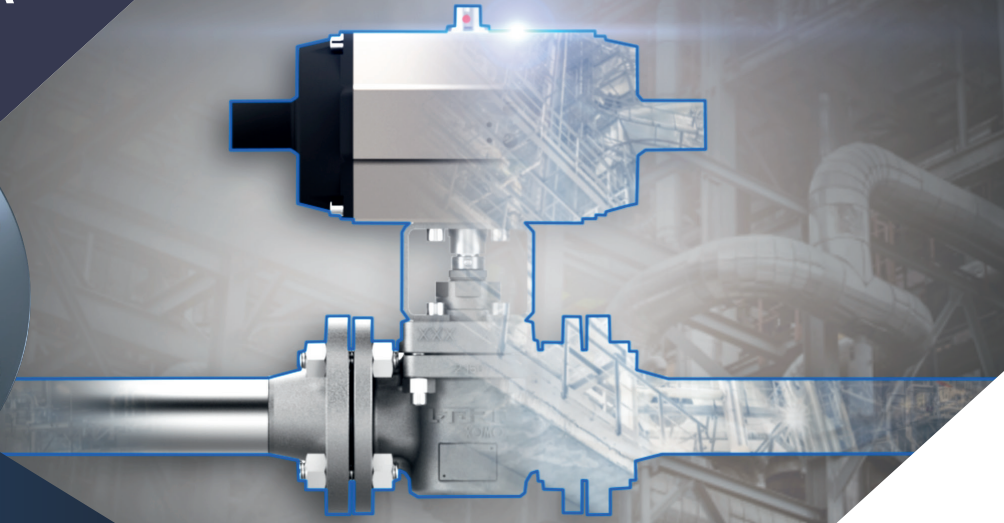


# XOMOX<sup>®</sup>



## L-TORQ XOMOX<sup>®</sup> SLEEVED PLUG VALVES

Most Compact Automated SPV\* Packages  
in the Industry

### L-TORQ XOMOX<sup>®</sup>

brings remarkable benefits in torque, reparability and emissions performance, while maintaining the primary properties of a sleeved plug valve:

- ✔ Significant torque reduction and cost-effective automation package
- ✔ Complete cartridge kit for ease of repair
- ✔ In-line valve repair for maintenance, reducing downtime
- ✔ Independent plug adjustment and adjustable stem packing
- ✔ Designed to meet the latest Fugitive Emission Compliance according to ISO 15848-1



\*Sleeved Plug Valves

**CRANE**<sup>®</sup>



[www.cranecpe.com](http://www.cranecpe.com)

# L-TORQ XOMOX Features and Benefits

## 1 50% TORQUE REDUCTION



With an innovative cartridge design\* that offers controlled compression of sealing elements, L-TORQ XOMOX achieves leak tightness at lower compression forces and permits the most compact automated packages in the industry with up to 50% lower torque across all sizes than conventional sleeved plug valves.

## 2 40% SHORTER REPAIR TIME



L-TORQ XOMOX's replaceable cartridge doesn't require special skills and tools resulting in a significant reduction in process and maintenance costs.

## 3 FUGITIVE EMISSIONS CONTROL



Fugitive emissions control meets the TA-Luft 2021 emission standard aligned with ISO 15848-1 BH CO3 200°C SSA0, a futureproof design for our customers.

TORQUE REDUCTION	REPAIRABILITY	FUGITIVE EMISSIONS
<p><b>1. Smaller Actuator</b> Up to 50% reduction torque enables customers to select smaller actuated packages with lower cost</p> <p><b>2. Lighter Weight</b> Ease of installation and handling</p> <p><b>3. Longer Life</b> Expected longer life of seal because of controlled compression</p> <p><b>4. Sleeve Cartridge Design</b> Patented modular sleeve cartridge</p> <p><b>5. Inverted Plug</b> Making it easier to adjust</p>	<p><b>6. Complete Repair Plug Kit</b> In-line repair without the requirement of a special toolkit and highly skilled operators</p> <p><b>7. Compact Sleeve Cartridge Design</b> Cartridge can be replaced, making the assembly process simple, modular and less time consuming</p>	<p><b>8. TA-Luft 2021 Compliance</b> Meeting stringent TA-Luft 2021 standard</p> <p><b>9. Superior Fugitive Emissions Control</b> Per ISO 15848-1 BH CO3 SSA0</p> <p><b>10. PTFE-Braided Packing</b> PTFE braided packing and spiral wound gasket provide leak-tight sealing between stem and cover</p>

### Materials of Construction

- Body: A216 Gr. WCB, A351 Gr. CF8M
- Sleeve: PFA

### Size Range

- 1/2" up to 6"

### Pressure Ratings

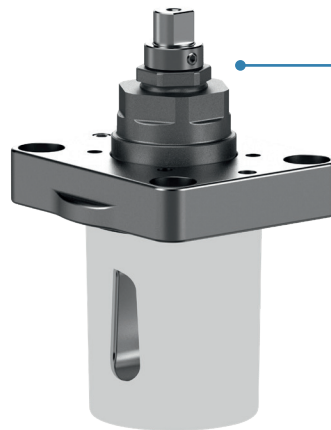
- ASME Class 150, 300

### Sealing Packing

- Cover Joint: 50% PTFE & 50% Graphite Spiral Wound
- Gasket: Monel or SS trim
- Stem Seals: PTFE or Graphite

### Actuator Mounting

- ISO 5211 actuator mounting and a standard interface for accessories according to VDI/VDE



MODULAR PFA CARTRIDGE FOR EASE OF REPAIR THAT DOESN'T REQUIRE SPECIAL SKILLS AND TOOLS  
\*PATENT PENDING

### CRANE CHEMPHARMA & ENERGY

Xomox International GmbH & Co. OHG  
Von-Behring-Straße 15  
8131 Lindau (Bodensee)  
Germany  
Tel: +49 8382 702 0  
Fax: +49 8382 702 144

Crane Company, and its subsidiaries cannot accept responsibility for possible errors in catalogues, brochures, other printed materials, and website information. Crane Company reserves the right to alter its products without notice, including products already on order provided that such alteration can be made without changes being necessary in specifications already agreed. All trademarks in this material are the property of the Crane Company or its subsidiaries. The Crane and Crane brands logotype (ALOYCO®, BAUM®, CENTER LINE®, CRANE®, CRYOWORKS®, DEPA® & ELRO®, DOPAK®, DUO-CHEK®, FLOWSEAL®, GYROLOK®, GO REGULATOR®, HOKE®, JENKINS®, KROMBACH®, NOZ-CHEK®, PACIFIC VALVES®, RESISTOFLEX®, REVO®, SAUNDERS®, STOCKHAM®, TECHNIFAB®, TEXAS SAMPLING®, WESTLOCK CONTROLS®, WTA®, and XOMOX®) are registered trademarks of Crane Company. All rights reserved.