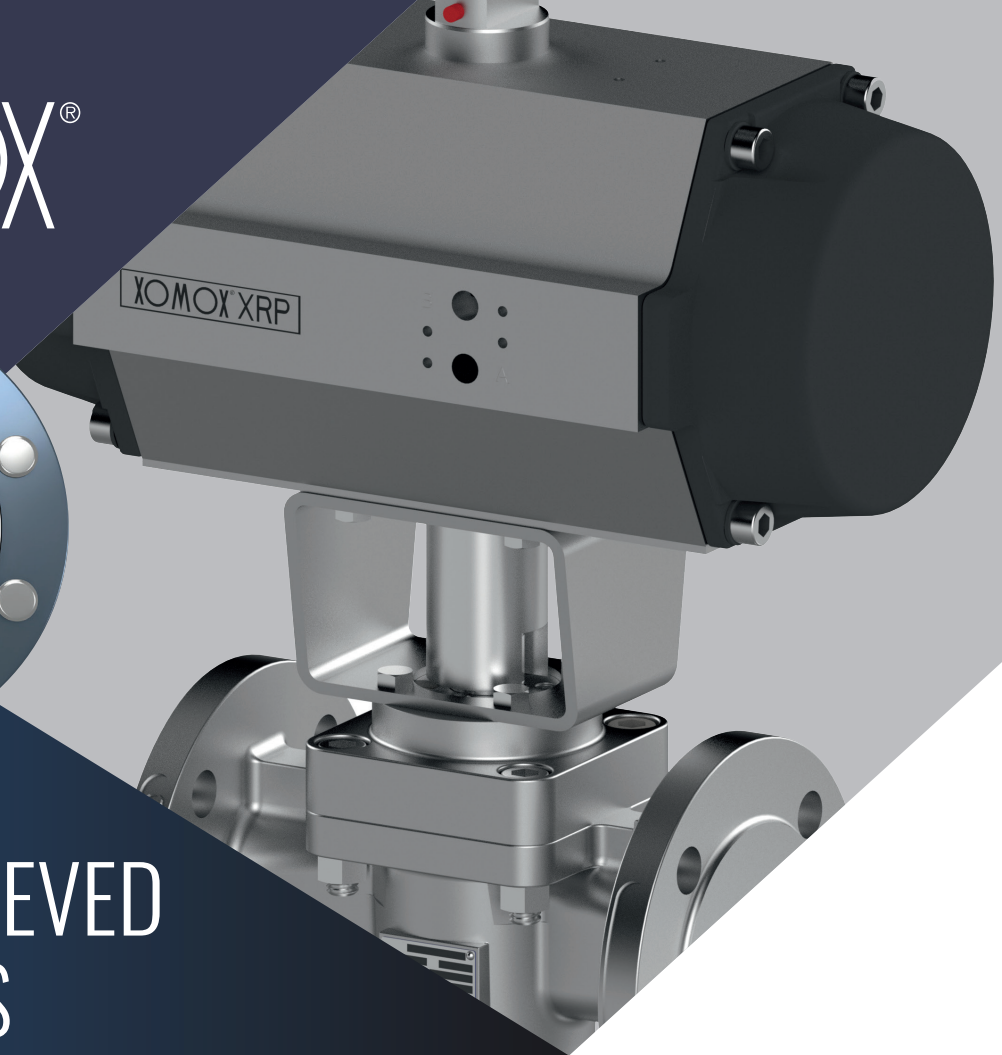


# XOMOX®



## XOMOX® SLEEVED PLUG VALVES SERIES FEO

For customers requiring cavity free valve design and inline adjustability, XOMOX® Sleeved Plug Valves provide reliable performance in a wide range of applications. **Shut it and Forget it!**

**Enhanced tightness and compliance.  
The best sleeved plug valve solution.**

- ✓ Regulatory compliance to **ISO 15848-1:2015/2017** and **TA-LUFT 2021**
- ✓ Simplified maintenance & independent adjustment
- ✓ Certified temperature range from **-60°C to 275°C**
- ✓ Certified with **AH** - less than 20 ppm **FUGITIVE EMISSIONS**
- ✓ ISO 5211 top flange
- ✓ Live loaded design & triple sealing system
- ✓ No cavities, no contamination
- ✓ Superior, longer-lasting in-line sealing

**CRANE**



[www.cranecpe.com](http://www.cranecpe.com)

# XOMOX® FEO Sleeved Plug Valves Design Features

SAFETY	COMPLIANCE	RELIABLE DESIGN
<p><b>Increased Safety</b></p> <ul style="list-style-type: none"> <li>Independent plug &amp; packing adjustment allow for longer lifetime and higher safety.</li> <li>Live loaded design</li> <li>Triple packing sealing ensure superior sealing performance and extended service life for demanding applications</li> </ul>	<p><b>Compliant to latest industry standards</b></p> <ul style="list-style-type: none"> <li>TA-LUFT 2021</li> <li>ISO 15848-1:2015/2017                             <ul style="list-style-type: none"> <li>AH CO3 SSA0 t(-29°C/+260°C) &amp;</li> <li>BH CO3 SSA0 t(-60°C/+275°C)</li> <li>Less than 20 ppm emissions</li> <li>CO3 = 4 thermal cycles</li> <li>SSA0 = 0 adjustments necessary</li> </ul> </li> <li>DIN EN ISO 5211</li> </ul>	<p><b>Proven Design Features</b></p> <ul style="list-style-type: none"> <li>360° Port Lips and high pressure ribs proven to protect sleeves and ensure extended service life and inline tightness.</li> <li>Cavity free design eliminates media accumulation and sticking, ensuring clean, reliable performance for sensitive processing applications.</li> </ul>

**Pressure Range**

- Up to 40 Bar ( 580 psi ) DIN Valves
- Up to 50 Bar ( 725 psi ) ANSI Valves

**Temperature Range**

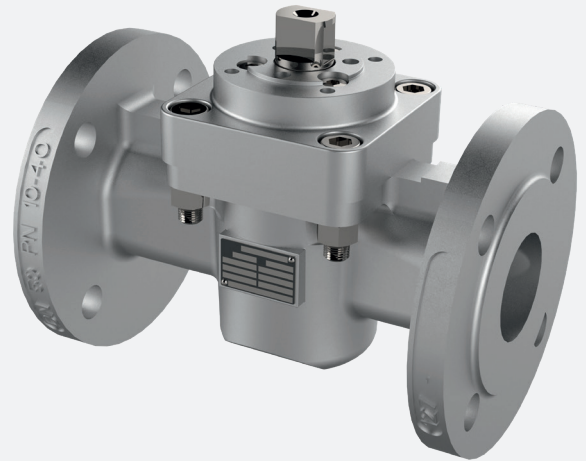
- Standard Temperature Range: -100°C to 300°C (-148°F to 572°F)
- Certified AH Temperature Range: -29°C to 260°C (-20°F to 500°F)
- Certified BH Temperature Range: -60°C to 275°C (-76°F to 527°F)

**Configurations**

- Standard with PTFE Packings
- Firesafe FIS with Graphite Packings
- Standard Port
- Full Port

**Typical Applications**

- MDI/TDI
- Chlor-Alkali
- EDC
- VCM
- Methanol
- Phosgene
- Dry-Chlorine
- Hydrogen Cyanide
- Isocyanate
- Butadiene
- Nitrogen
- Sulfuric Acid
- Phosphoric Acid
- Ethylene Oxide
- Ethylene Glycol



SPV Series	Configuration	Flange	Pressure Class	DN Inch	15	20	25	32	40	50	65	80	100	125	150	200	250	300	350	400				
					1 1/2"	3/4"	1"	1 1/4"	1 1/2"	2"	2 1/2"	3"	4"	5"	6"	8"	10"	12"	14"	16"				
127-FEO	2-Way	DIN	PN10-40		•	•	•	•	•	•	•	•	•	•	•	•	•	•	•	•	•			
137-FEO	3-Way Bottom		PN10-40		•	•	•	•	•	•	•	•	•	•	•	•	•	•	•	•	•	•		
177-FEO	3-Way Side		PN10-40		•	•	•	•	•	•	•	•	•	•	•	•	•	•	•	•	•	•	•	
147-FEO	4-Way		PN10-40		•	•	•	•	•	•	•	•	•	•	•	•	•	•	•	•	•	•	•	
067-FEO	2-Way	ANSI	Class 150		•	•	•	•	•	•	•	•	•	•	•	•	•	•	•	•	•	•	•	
0367-FEO			Class 300		•	•	•	•	•	•	•	•	•	•	•	•	•	•	•	•	•	•	•	•
037-FEO	3-Way Bottom		Class 150		•	•	•	•	•	•	•	•	•	•	•	•	•	•	•	•	•	•	•	•
0337-FEO			Class 300		•	•	•	•	•	•	•	•	•	•	•	•	•	•	•	•	•	•	•	•
077-FEO	3-Way Side		Class 150		•	•	•	•	•	•	•	•	•	•	•	•	•	•	•	•	•	•	•	•
0377-FEO			Class 300		•	•	•	•	•	•	•	•	•	•	•	•	•	•	•	•	•	•	•	•
047-FEO			4-Way		Class 300	•	•	•	•	•	•	•	•	•	•	•	•	•	•	•	•	•	•	•

Valves also available as control valve „5...“, partial jacketed valve „...-H“, full port „2...“, „9...“ fully jacketed valve and with welded or threaded ends“

**CRANE CHEMPHARMA & ENERGY**  
 Xomox International GmbH & Co. OHG  
 Von-Behring-Straße 15  
 8131 Lindau (Bodensee)  
 Germany  
 Tel: +49 8382 702 0  
 Fax: +49 8382 702 144

Crane Company, and its subsidiaries cannot accept responsibility for possible errors in catalogues, brochures, other printed materials, and website information. Crane Company reserves the right to alter its products without notice, including products already on order provided that such alteration can be made without changes being necessary in specifications already agreed. All trademarks in this material are the property of the Crane Company or its subsidiaries. The Crane and Crane brands logotype (ALOYCO®, BAUM®, CENTER LINE®, CRANE®, CRYOWORKS®, DEPA® & ELRO®, DOPAK®, DUO-CHEK®, FLOWSEAL®, GYROLOK®, GO REGULATOR®, HOKE®, JENKINS®, KROMBACH®, NOZ-CHEK®, PACIFIC VALVES®, RESISTOFLEX®, REVO®, SAUNDERS®, STOCKHAM®, TECHNIFAB®, TEXAS SAMPLING®, WESTLOCK CONTROLS®, WTA®, and XOMOX®) are registered trademarks of Crane Company. All rights reserved.