

## Saunders<sup>®</sup> Stainless Steel Non-Sealed Manual Bonnet

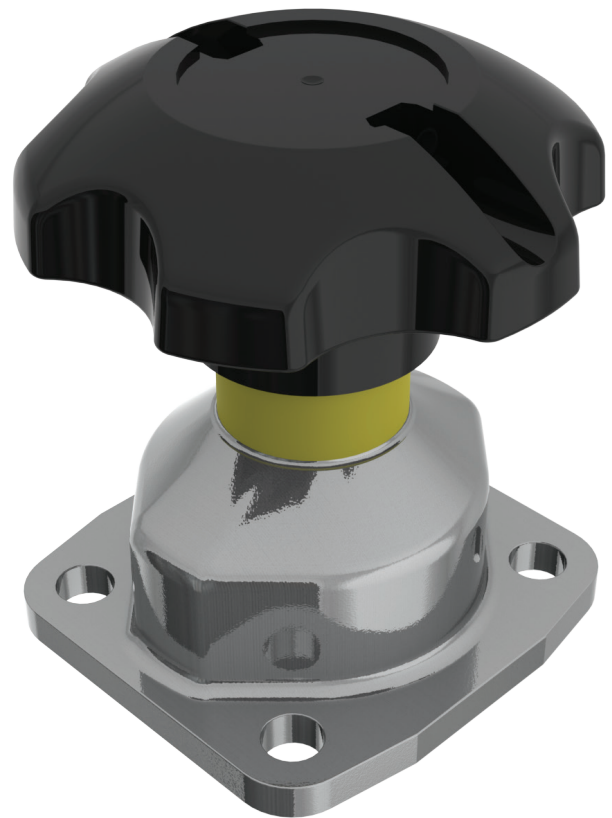
[www.cranecpe.com](http://www.cranecpe.com)

Constructed from FDA conforming materials, this bonnet offers the best possible levels of security, durability and corrosion resistance.

### Key features include:

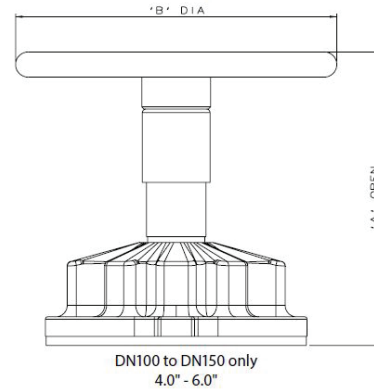
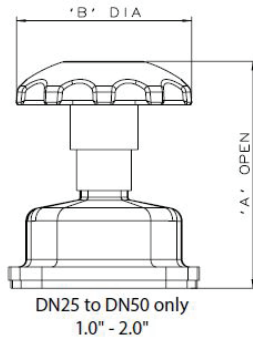
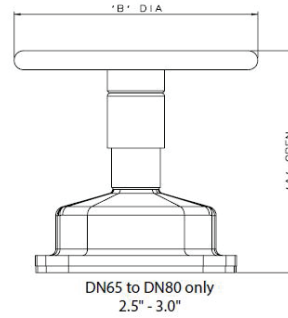
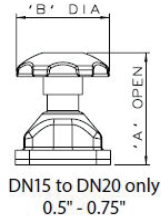
- Stainless steel shell and polymer hand wheel
- Smooth contours and a bright electropolished surface.
- Supplied with PES (polyethersulphone) hand wheel to offer high temperature performance and excellent chemical resistance in size range DN15 – DN50 (0.50" – 2.00")
- Supplied with cast iron hand wheel in sizes DN65 – DN150 (2.50" – 6.00")
- Polymer hand wheel reduces heat transfer
- Stainless steel epindle and compressor
- High visibility yellow indicator sleeve

**Please visit our web-based drawing library at:**  
[www.saundersdrawings.com](http://www.saundersdrawings.com)



# Saunders<sup>®</sup> Stainless Steel Non-Sealed Manual Bonnet

## Bonnet Dimensions



## Dimensions and Weights

Valve Size		A		B		Weight	
mm	in	mm	in	mm	in	kg	lbs
DN15	0.5	75	2.95	62	2.44	0.7	1.5
DN20	0.75	75	2.95	62	2.44	0.8	1.8
DN25	1.00	94	3.70	80	3.15	0.9	2.0
DN40	1.50	136	5.35	120	4.72	1.4	3.1
DN50	2.00	152	5.98	120	4.72	2.1	4.6
DN65	2.50	193	7.60	170	6.69	5.5	12.1
DN80	3.00	211	8.31	230	9.06	7.9	17.4
DN100	4.00	256	10.08	281	11.06	11.8	26.0
DN150	6.00	370	14.57	368	14.49	26.5	58.3

Grange Road, Cwmbran  
Gwent NP44 3XX,  
United Kingdom  
Phone: +44 1633 486666  
Fax: +44 1633 486777  
www.cranecpe.com

### Crane ChemPharma & Energy, Saunders<sup>®</sup>

Crane Co., and its subsidiaries cannot accept responsibility for possible errors in catalogues, brochures, other printed materials, and website information. Crane Co. reserves the right to alter its products without notice, including products already on order provided that such alteration can be made without changes being necessary in specifications already agreed. All trademarks in this material are property of the Crane Co. or its subsidiaries. The Crane and Crane brands logotype, in alphabetical order, (ALOYCO<sup>®</sup>, CENTER LINE<sup>®</sup>, COMPAC-NOZ<sup>®</sup>, CRANE<sup>®</sup>, DEPA<sup>®</sup>, DUO-CHEK<sup>®</sup>, ELRO<sup>®</sup>, FLOWSEAL<sup>®</sup>, JENKINS<sup>®</sup>, KROMBACH<sup>®</sup>, NOZ-CHEK<sup>®</sup>, PACIFIC VALVES<sup>®</sup>, RESISTOFLEX<sup>®</sup>, REVO<sup>®</sup>, SAUNDERS<sup>®</sup>, STOCKHAM<sup>®</sup>, TRIANGLE<sup>®</sup>, UNI-CHEK<sup>®</sup>, WTA<sup>®</sup>, and XOMOX<sup>®</sup>) are registered trademarks of Crane Co. All rights reserved.