

CRANE®

**NEW!**

## Crane® FKX 9000 Triple Offset Butterfly Valves

[CraneFKX9000.com](http://CraneFKX9000.com)

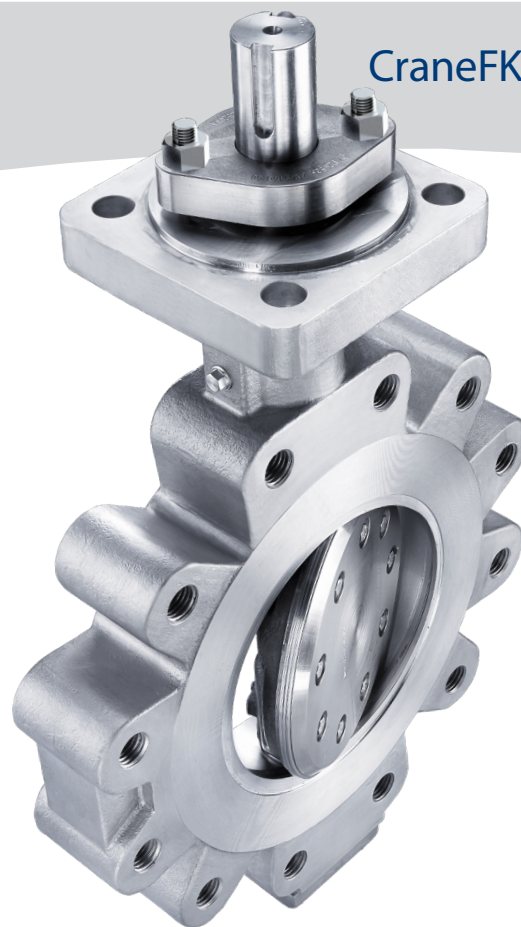
### Key features include:

- 1 Optimized Seat Angle:** An innovative seat angle design and Stellite® hard-faced valve body seat deliver a longer seal life and improved abrasion resistance, even after extensive cycling. Designed to eliminate wedging or binding of the disc, and lower the operating torque, the Crane®FKX 9000 can **REDUCE TOTAL COST OF OWNERSHIP BY UP TO 50%.\***

*\*Proven against leading TOV supplier, in customer's Methyl Diisocyanates application*

- 2 Metal-to-Metal Sealing:** The precision machined metal seat and seal ring deliver reliable and bi-directional shutoff in high-temperature, high-pressure and severe service applications among others. The right-angle conical seat design facilitates an almost **FRICTIONLESS IN-LINE SEALING.**

- 3 Innovative Stem Seal Design:** permits superior FUGITIVE EMISSIONS CONTROL (ISO 15848, Class BH) under recurrent thermal cycling, and **REDUCES POTENTIAL DOWNTIME.**



- 4 Torque-Seating:** Unlike position-seated ball, butterfly or plug valves, the torque-seated Crane®FKX 9000 self-adjusts to evenly distribute seal compression. A "floating" seal ring and wide seal ring supporting gasket yield a **BETTER SEAL** to eliminate binding and to enhance performance.

CRANE®

[www.cranecpe.com](http://www.cranecpe.com)

# Crane® FKX 9000 Triple Offset Butterfly Valves

## Materials of Construction

- Standard: A216 Gr. WCB, A351 Gr. CF8M; 1.0619, 1.4408
- Options upon request: Duplex, Superduplex, LCC/LCB, WC6, CF3M, Monel®, Inconel®, Hastelloy®, Alloy 20; 1.4469, 1.7357, 1.4409, 2.4460

## Size Range

- 3" up to 64"; DN 80 up to DN 1600, in a single piece cast body design

## Pressure Ratings

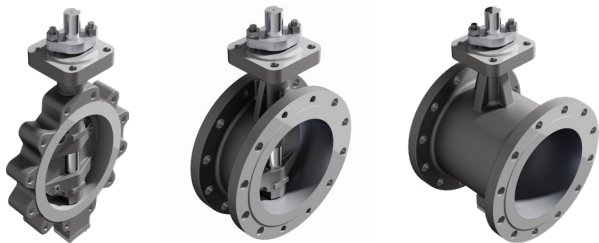
- ASME Class 150, 300, 600; PN 10, 16, 25, 40, 63, 100

## Temperature Range

- -76°F up to 1022°F; -60°C up to 550°C, depending on material selection

## Body Configurations

- Lug, Double Flanged Short Pattern, Double Flanged Long Pattern



## Standard Features and Compliance

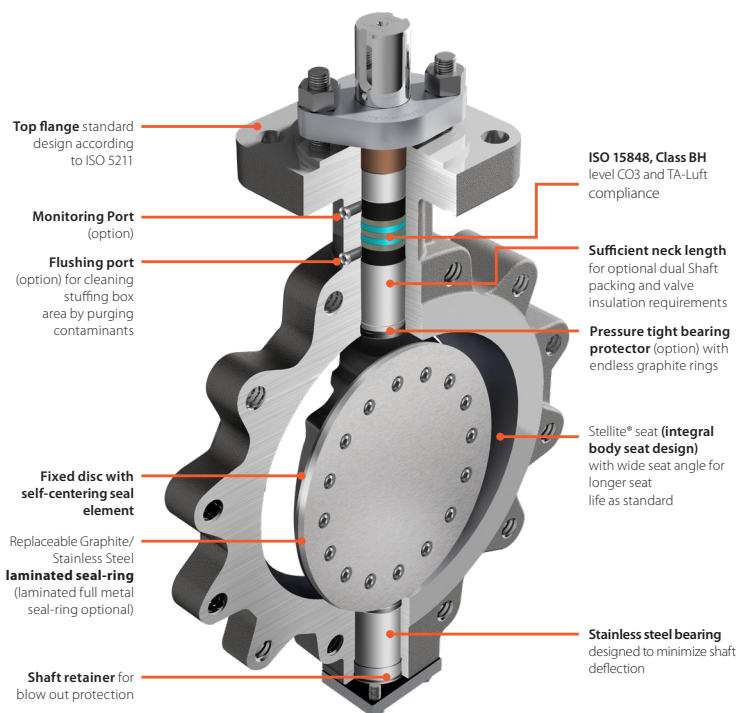
- Bearing designed to minimize shaft deflection
- Graphite/Stainless Steel laminated seal-ring
- ISO 15848, Class BH, level CO3 is our standard offering
- API 609 and ASME B16.34; EN 12016 valve design standard
- Zero leakage as per API 598; EN12266 leakage rate A
- API 607, 6th edition; EN 10497: Fire Tested
- EPA Method 21 (Fugitive Emissions Compliance)
- Quality certification as per ISO 9001
- TA-Luft compliance acc. to VDI 2440
- CE-marking according to DGRL 2014/68/EU
- ISO 5211 actuator mounting bracket
- SIL 2 and 3
- API 641
- CRN (Canada) certified
- TSG (China) certified
- EAC (Russia) certified

## Typical Applications

- Steam (Saturated & Superheated)
- Hydrocarbons
- Hydrogen
- Oxygen
- Hot gases
- Sulphur (Tail Gas)
- Chlorinated Solvents
- Flare Gas
- Chemical Solvents

## Special Options

- Capable to meet ISO 15848 Class AH, level CO2
- Pressure tight bearing protector
- Monitoring port
- Flushing port for cleaning stuffing box area by purging contaminants
- Dual and industrial Packing
- Chemical and live-loaded gland flange
- Graphite-free and metal-PTFE laminated seal
- API 6D test is available upon request
- Heating jacket
- Higher temperature ratings available upon request



CPE-CRANE-FKX 9000-FL-EN-A4-2020\_06\_17

Friedrich Krombach GmbH  
 Armaturenwerke  
 Marburger Str. 364  
 57223 Kreuztal, Germany  
 Tel.: +49 2732 520 00  
 Fax: +49 2732 520 100  
 www.cranecpe.com

## Crane ChemPharma & Energy

Crane Co., and its subsidiaries cannot accept responsibility for possible errors in catalogues, brochures, other printed materials, and website information. Crane Co. reserves the right to alter its products without notice, including products already on order provided that such alteration can be made without changes being necessary in specifications already agreed. All trademarks in this material are property of the Crane Co. or its subsidiaries. The Crane and Crane brands logotype, in alphabetical order, (ALOYCO®, CENTER LINE®, COMPAC-NOZ®, CRANE®, DEPA®, DUO-CHEK®, ELRO®, FLOWSEAL®, JENKINS®, KROMBACH®, NOZ-CHEK®, PACIFIC VALVES®, RESISTOFLEX®, REVO®, SAUNDERS®, STOCKHAM®, TRIANGLE®, UNI-CHEK®, WTA®, and XOMOX®) are registered trademarks of Crane Co. All rights reserved.