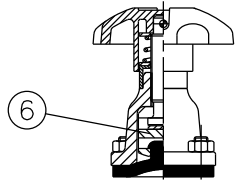
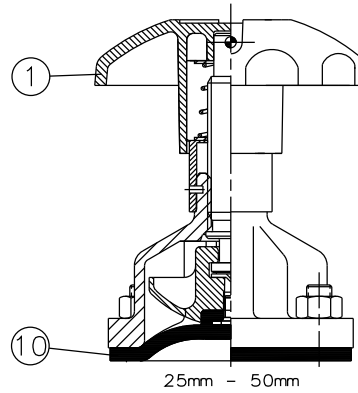


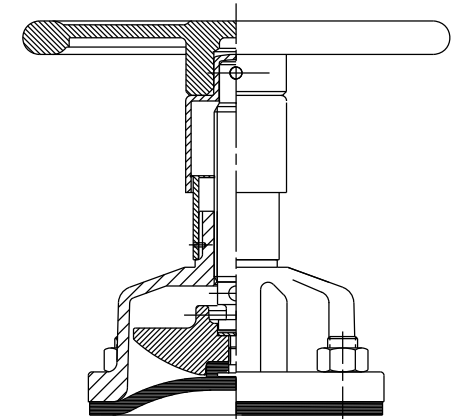
RUBBER LINE DIAPHRAGM



15mm - 20mm

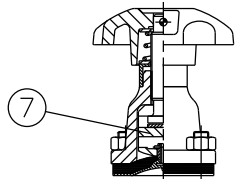


25mm - 50mm

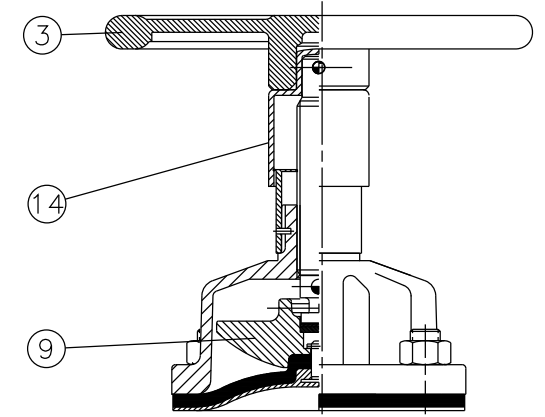
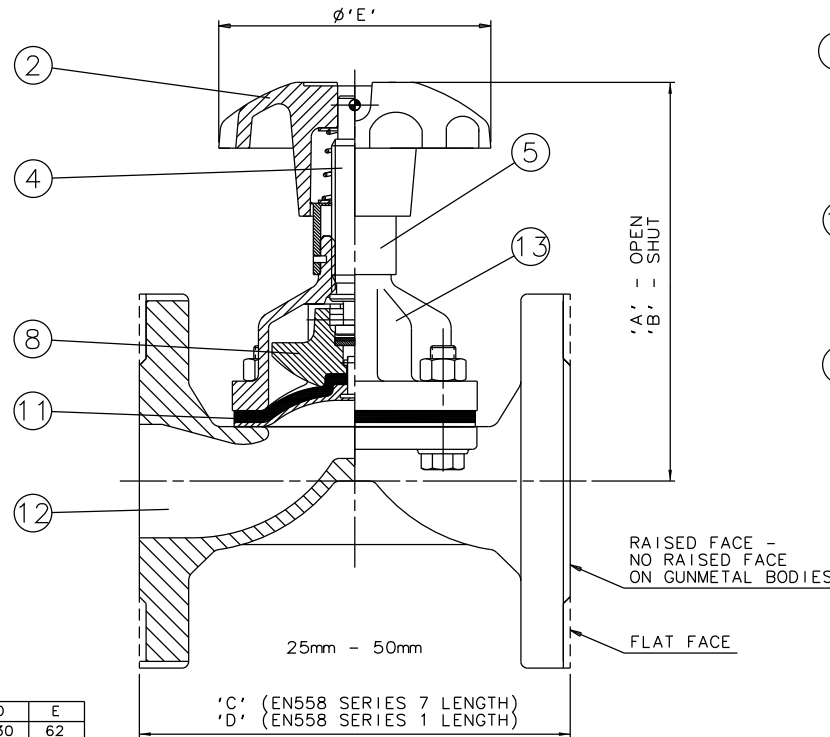


65mm - 150mm

RUBBER/PTFE LINE DIAPHRAGM



15mm - 20mm



65mm - 150mm

Item	Component	Material	Where Used							
1	HANDWHEEL	ABS	15mm-50mm							
2		CAST IRON	15mm-50mm							
3		CAST IRON	65mm-150mm							
4	SPINDLE	STAINLESS STEEL								
5	BONNET SLEEVE	POLYPROPYLENE								
6	COMPRESSOR	CAST STEEL	15mm-20mm	Size(DN)	A	B	C	D	E	
7		SILICON ALUM.	15mm-50mm	15	100	93	108	130	62	
8		CAST IRON	25mm-150mm	20	91	85	117	150	62	
9		CAST IRON	65mm-150mm	25	108	98	127	160	80	
10	LINE DIAPHRAGM	RUBBER		32	143	131	146	180	120	
11		RUBBER/PTFE		40	157	141	159	200	120	
12	BODY	CAST IRON		50	175	152	190	230	120	
		S.G. IRON		65	226	194	216	290	170	
		STAINLESS STEEL		80	243	208	254	310	230	
		GUNMETAL		100	308	262	305	350	280	
		CAST STEEL		125	388	322	356	400	280	
13	BONNET	S.G. IRON		150	442	367	406	480	368	
14	HANDWHEEL BOSS	POLYPROPYLENE	65mm-150mm	*150mm FOR CAST IRON BODIES WITH PN16 FLANGES						

The information on this sheet is Private and Confidential and is the property of Crane Process Flow Technologies Limited and must not be published directly or indirectly in any manner whatsoever without the written permission of the Company and must not be used in any way detrimental to their interests.
© Crane Process Flow Technologies

CRANE	Process Flow Technologies A Crane Co. Company	Saunders The Science Inside
Title GENERAL ARRANGEMENT OF 'A' TYPE RISING HANDWHEEL INDICATOR BONNET ASSEMBLY (4000) FITTED ON UNLINED FLANGED BODY		
Drawn NAW	Date 06.08.13	UNCONTROLLED IN HARD COPY FORMAT
Checked RND	Date 06.08.13	
First Angle Projection Method E		DO NOT SCALE
Drawing No. A-SG-RHI-UNLINED		Issue. 1