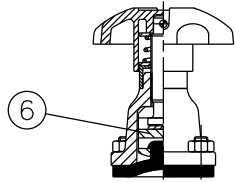
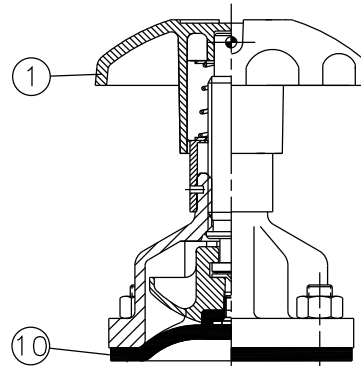


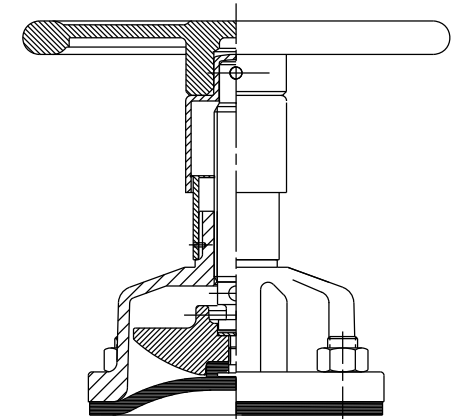
RUBBER LINE DIAPHRAGM



15mm - 20mm

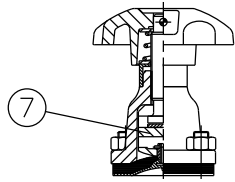


25mm - 50mm

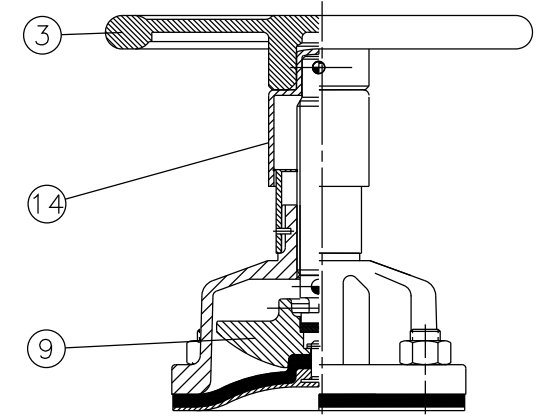
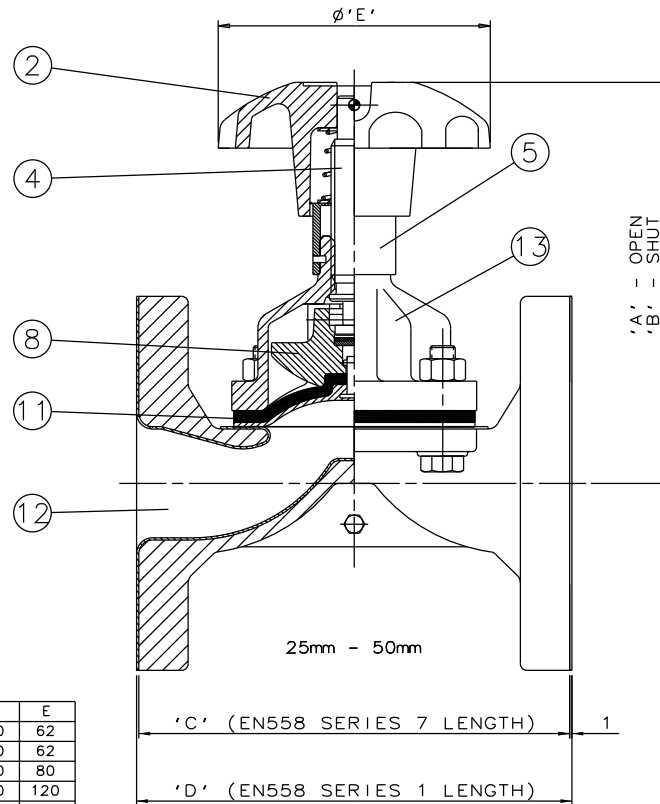


65mm - 150mm

RUBBER/PTFE LINE DIAPHRAGM



15mm - 20mm



65mm - 150mm

Item	Component	Material	Lining	Where Used						
1	HANDWHEEL	ABS		15mm-50mm						
2		CAST IRON		15mm-50mm	Size(DN)	A	B	C	D	E
3		CAST IRON		65mm-150mm	15	101	94	110	130	62
4	SPINDLE	STAINLESS STEEL			20	92	86	119	150	62
5	BONNET SLEEVE	POLYPROPYLENE			25	109	99	129	160	80
6	COMPRESSOR	CAST STEEL		15mm-20mm	32	144	132	148*	180	120
7		SILICON ALUM.		15mm-50mm	40	158	142	161	200	120
8		CAST IRON		25mm-150mm	50	176	153	192	230	120
9		CAST IRON		65mm-150mm	65	228	196	218	290	170
10	LINE DIAPHRAGM	RUBBER			80	244	210	256	310	230
11		RUBBER/PTFE			100	309	263	307	350	280
12	BODY	CAST IRON	GLASS		125	389	323	358	360	280
13	BONNET	S. G. IRON			150	443	368	408	480	368
14	HANDWHEEL BOSS	POLYPROPYLENE		65mm-150mm						

*150mm FOR CAST IRON BODIES WITH PN16 FLANGES

The information on this sheet is Private and Confidential and is the property of Crane Process Flow Technologies Limited and must not be published directly or indirectly in any manner whatsoever without the written permission of the Company and must not be used in any way detrimental to their interests.
 © Crane Process Flow Technologies

CRANE	Process Flow Technologies A Crane Co. Company	Saunders The Science Inside
Title		
GENERAL ARRANGEMENT OF 'A' TYPE RISING HANDWHEEL INDICATOR BONNET ASSEMBLY (4000) FITTED ON GLASS LINED FLANGED BODY		
Drawn NAW	Date 08.08.13	UNCONTROLLED IN HARD COPY FORMAT
Checked RND	Date 08.08.13	
First Angle Projection Method E	DO NOT SCALE	Drawing No. A-SG-RHI-GLASS
		Issue. 1