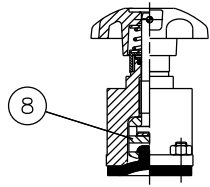
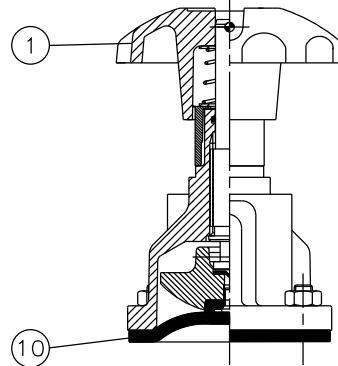


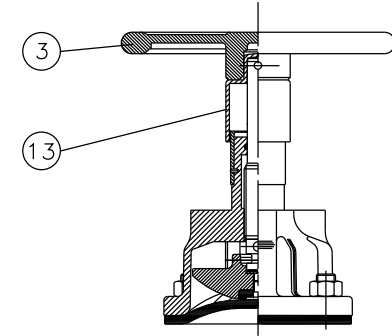
RUBBER LINE DIAPHRAGM



15-20mm

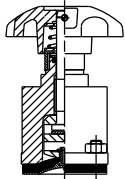


25-50mm

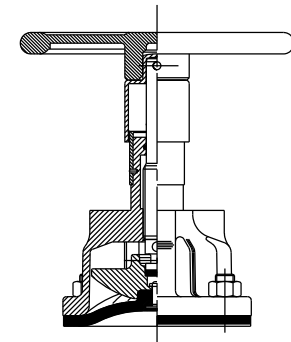
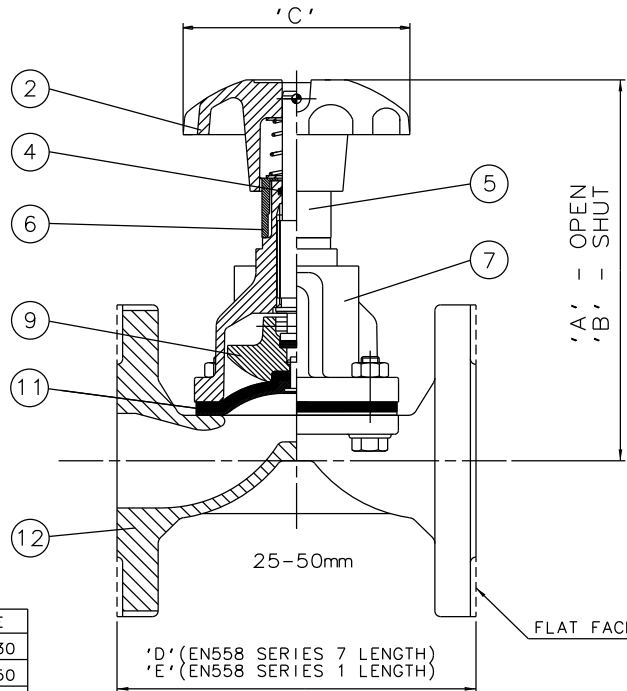


65-150mm

RUBBER/PTFE LINE DIAPHRAGM



15-20mm



65-150mm

Item	Component	Material	Where Used	Size(DN)	A	B	C	D	E
1	HANDWHEEL	ABS	15mm-50mm	15	114	107	62	108	130
2		CAST IRON	15mm-50mm	15	114	107	62	108	130
3		CAST IRON	65mm-150mm	20	105	99	62	117	150
4	'O'RING	VITON	15mm-150mm	20	105	99	62	117	150
5	SPINDLE	MILD STEEL		25	129	119	80	127	160
6	BONNET SLEEVE	POLYPROPYLENE		32	166	155	120*	146	180
7	BONNET	S.G. IRON	15mm-50mm	40	184	168	120	159	200
8		CAST IRON	65mm-150mm	40	184	168	120	159	200
9	COMPRESSOR	MILD STEEL	15mm-20mm	50	199	176	120	190	230
10		CAST IRON	25mm-150mm	65	247	216	170	216	290
11	LINE DIAPHRAGM	RUBBER		80	277	242	230	254	310
12		RUBBER/PTFE		100	346	299	280	305	350
12	BODY	S.G. IRON		125	418	352	280	356	400
		STAINLESS STEEL		150	476	400	368	406	480
		GUNMETAL							
		CAST STEEL							
13	HANDWHEEL BOSS	POLYPROPYLENE	65mm-150mm	*150mm FOR CAST IRON BODIES WITH PN16 FLANGES					

The information on this sheet is Private and Confidential and is the property of Crane Process Flow Technologies Limited and must not be published directly or indirectly in any manner whatsoever without the written permission of the Company and must not be used in any way detrimental to their interests.  
 © Crane Process Flow Technologies

**CRANE** Process Flow Technologies  
 A Crane Co. Company

**Saunders**  
 The Science Inside

Title  
 GENERAL ARRANGEMENT OF 'A' TYPE RISING  
 HANDWHEEL SEALED BONNET ASSEMBLY (9100)  
 FITTED ON UNLINED FLANGED BODY

Drawn NAW Date 19.08.13  
 Checked RND Date 19.08.13

UNCONTROLLED IN  
 HARD COPY FORMAT

First Angle Projection Method E  
 DO NOT SCALE

Drawing No. A-SG-CI-RHI-SEALED-UNLINED  
 Issue. 1