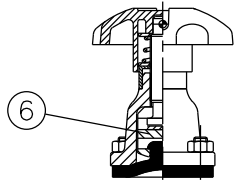
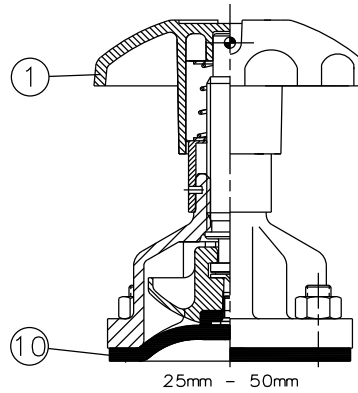


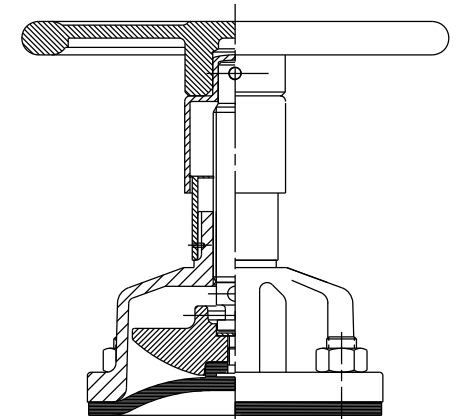
RUBBER LINE DIAPHRAGM



15mm - 20mm

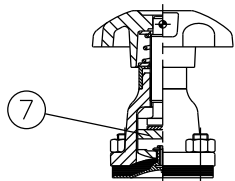


25mm - 50mm

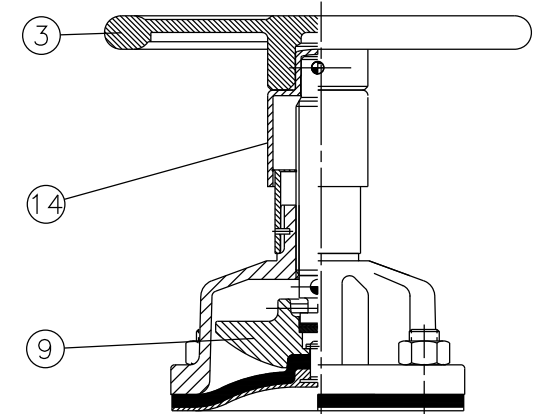
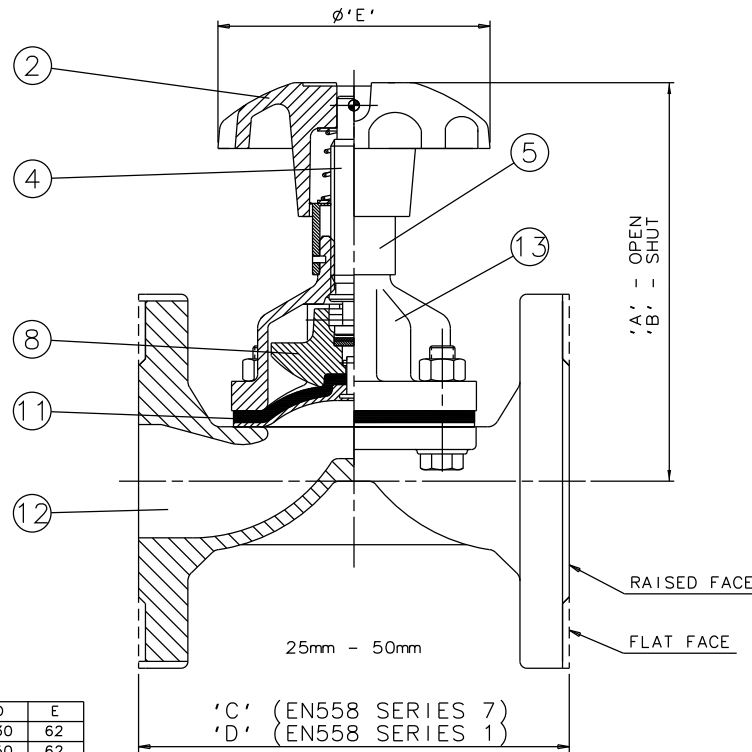


65mm - 150mm

RUBBER/PTFE LINE DIAPHRAGM



15mm - 20mm



65mm - 150mm

Item	Component	Material	Where Used
1	HANDWHEEL	ABS	15mm-50mm
2		CAST IRON	15mm-50mm
3		CAST IRON	65mm-150mm
4	SPINDLE	MILD STEEL	
5	BONNET SLEEVE	POLYPROPYLENE	
6	COMPRESSOR	MILD STEEL	15mm-20mm
7		SILICON ALUM.	15mm-50mm
8		CAST IRON	25mm-150mm
9		CAST IRON	65mm-150mm
10	LINE DIAPHRAGM	RUBBER	32 143 129 146 * 180 120
11		RUBBER/PTFE	40 157 140 159 200 120
12	BODY	CAST IRON	50 175 151 190 230 120
		S.G. IRON	65 226 194 216 290 170
		STAINLESS STEEL	80 243 208 254 310 230
		GUNMETAL	100 308 262 305 350 280
		CAST STEEL	125 388 322 356 400 280
13	BONNET	CAST IRON	150 442 367 406 480 368
14	HANDWHEEL BOSS	POLYPROPYLENE	65mm-150mm * 150mm FOR CAST IRON BODIES WITH PN16 FLANGES

The information on this sheet is Private and Confidential and is the property of Crane Process Flow Technologies Limited and must not be published directly or indirectly in any manner whatsoever without the written permission of the Company and must not be used in any way detrimental to their interests.
 © Crane Process Flow Technologies

CRANE	Process Flow Technologies A Crane Co. Company	Saunders The Science Inside
Title GENERAL ARRANGEMENT OF 'A' TYPE RISING HANDWHEEL INDICATOR BONNET ASSEMBLY (9000) FITTED ON UNLINED FLANGED BODY		
Drawn RI	Date 19.06.13	UNCONTROLLED IN HARD COPY FORMAT
Checked RND	Date 19.03.13	
First Angle Projection Method E		DO NOT SCALE
Drawing No. A-CI-RHI-UNLINED		Issue. 1