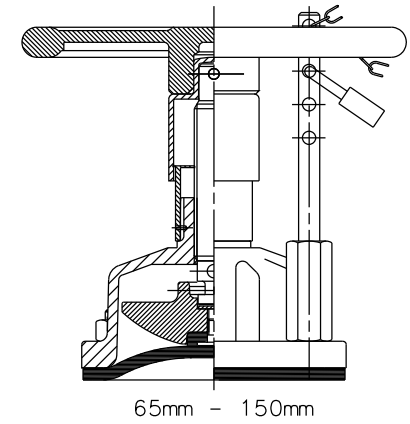
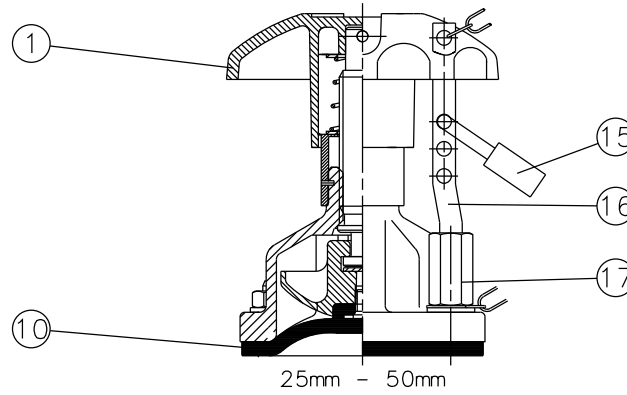
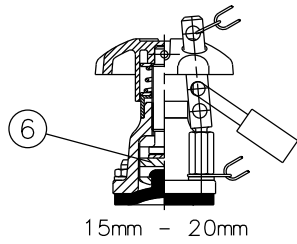
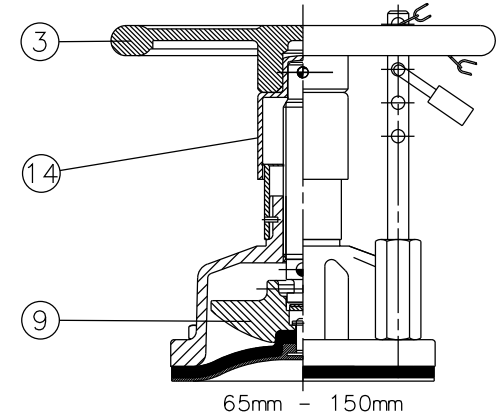
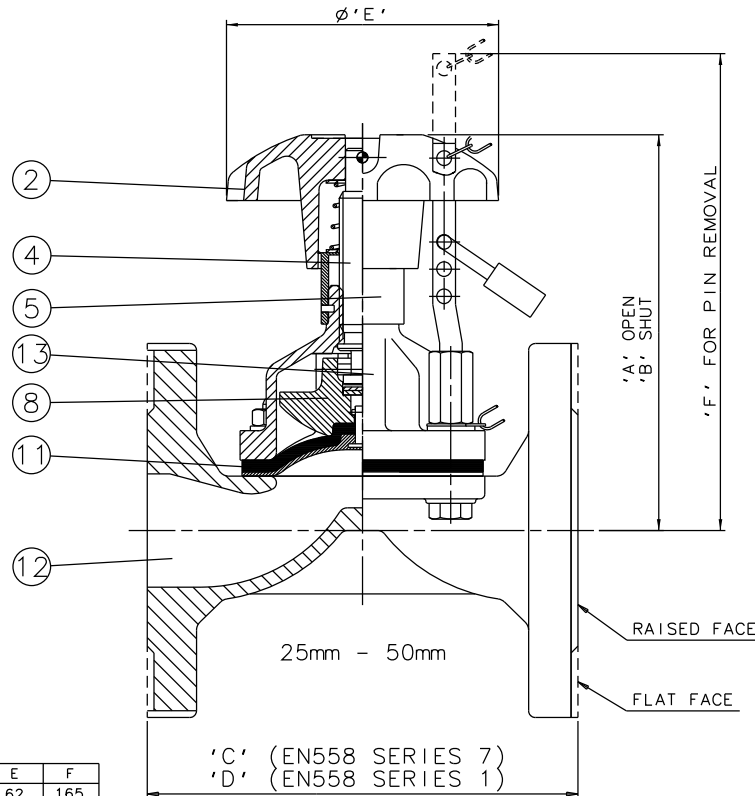
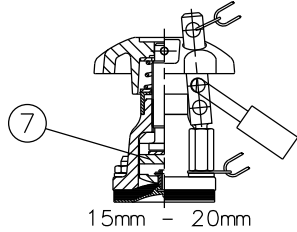


### RUBBER LINE DIAPHRAGM



### RUBBER/PTFE LINE DIAPHRAGM



Item	Component	Material	Where Used
1	HANDWHEEL	ABS	15mm-50mm
2		CAST IRON	15mm-50mm
3		CAST IRON	65mm-150mm
4	SPINDLE	MILD STEEL	
5	BONNET SLEEVE	POLYPROPYLENE	
6	COMPRESSOR	MILD STEEL	15mm-20mm
7		SILICON ALUM.	15mm-50mm
8		CAST IRON	65mm-150mm
9		CAST IRON	25mm-150mm
10	LINE DIAPHRAGM	RUBBER	
11		RUBBER/PTFE	
12	BODY	CAST IRON	
		S.G. IRON	
		STAINLESS STEEL	
		GUNMETAL	
		CAST STEEL	
13	BONNET	CAST IRON	
14	HANDWHEEL BOSS	POLYPROPYLENE	65mm-150mm
15	PADLOCK		
16	PADLOCK PIN	MILD STEEL	
17	PADLOCK NUT	STEEL	
		STAINLESS STEEL	15mm-150mm

Size (DN)	A	B	C	D	E	F
15	100	93	108	130	62	165
20	91	85	117	150	62	150
25	108	97	127	160	80	190
32	143	129	146*	180	120	250
40	157	140	159	200	120	270
50	175	151	190	230	120	290
65	226	194	216	290	170	260
80	243	208	254	310	230	300
100	308	262	305	350	280	350
125	388	322	356	400	280	400
150	442	367	406	480	368	460

\*150mm FOR CAST IRON BODIES WITH PN16 FLANGES

The information on this sheet is Private and Confidential and is the property of Crane Process Flow Technologies Limited and must not be published directly or indirectly in any manner whatsoever without the written permission of the Company and must not be used in any way detrimental to their interests.  
 © Crane Process Flow Technologies

<b>CRANE</b>	Process Flow Technologies A Crane Co. Company	<b>Saunders</b> The Science Inside
Title GENERAL ARRANGEMENT OF 'A' TYPE RISING HANDWHEEL INDICATOR BONNET ASSEMBLY WITH SIMPLE PADLOCKING (9300) FITTED ON UNLINED FLANGED BODY.		
Drawn R1	Date 20.06.13	UNCONTROLLED IN HARD COPY FORMAT
Checked RND	Date 20.06.13	
First Angle Projection Method E	DO NOT SCALE	Drawing No. A-CI-RHI-PLOCK-UNLINED
		Issue. A