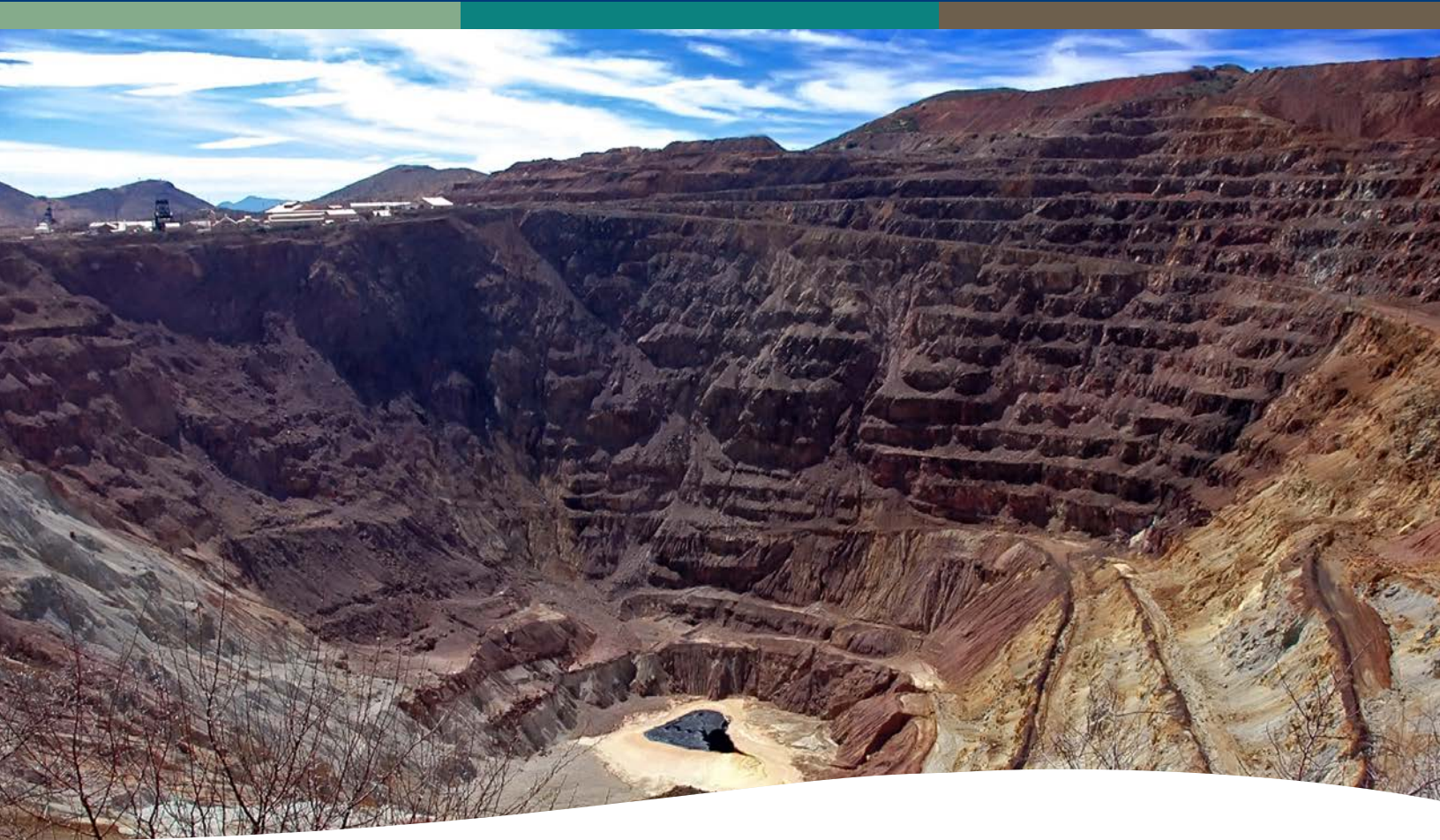




**brands you trust.**



Solutions for Mining and Mineral Processing

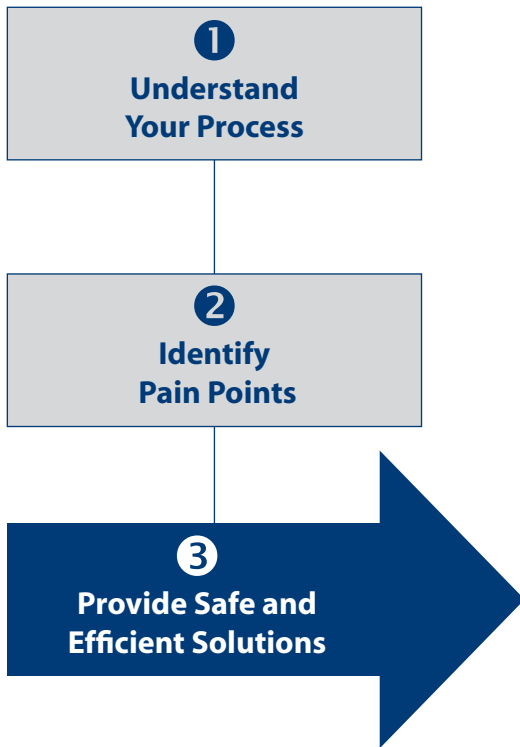


[www.cranecpe.com](http://www.cranecpe.com)

# Solutions for Mining and Mineral Processing

## From abrasive slurries to corrosive acids, CRANE has a solution for your toughest environments.

CRANE is a global integration of trusted brands working together to present our customers with a strong portfolio of proven products and complete fluid handling solutions within the mining and mineral processing industry.



### Krombach® Metal Seated Ball Valves

- Interchangeable ball and seat
- Reduced torque stress
- Self-cleaning inline seal

Typical Applications: HPAL/PAL autoclaves and severe service.



### Resistoflex® Lined Pipe and Fittings

- Smooth bore finish resists molecular penetration
- Custom shapes and branches
- Full vacuum rated up to 450°F

Typical Applications: corrosive and hazardous media.



### Xomox® Lined Valves & Accessories

- PFA and PVDV liners
- Ball, plug, check, butterfly, and more
- Full vacuum rated up to 450°F

Typical Applications: corrosive abrasive and hazardous media.



### WTA® Bellows Sealed Globe Valves

- Two part rising stem with anti-torque device and position indicator
- Full safety sealing system
- Stellite conically shaped piston and seat

Typical Applications: chlorine service and steam.

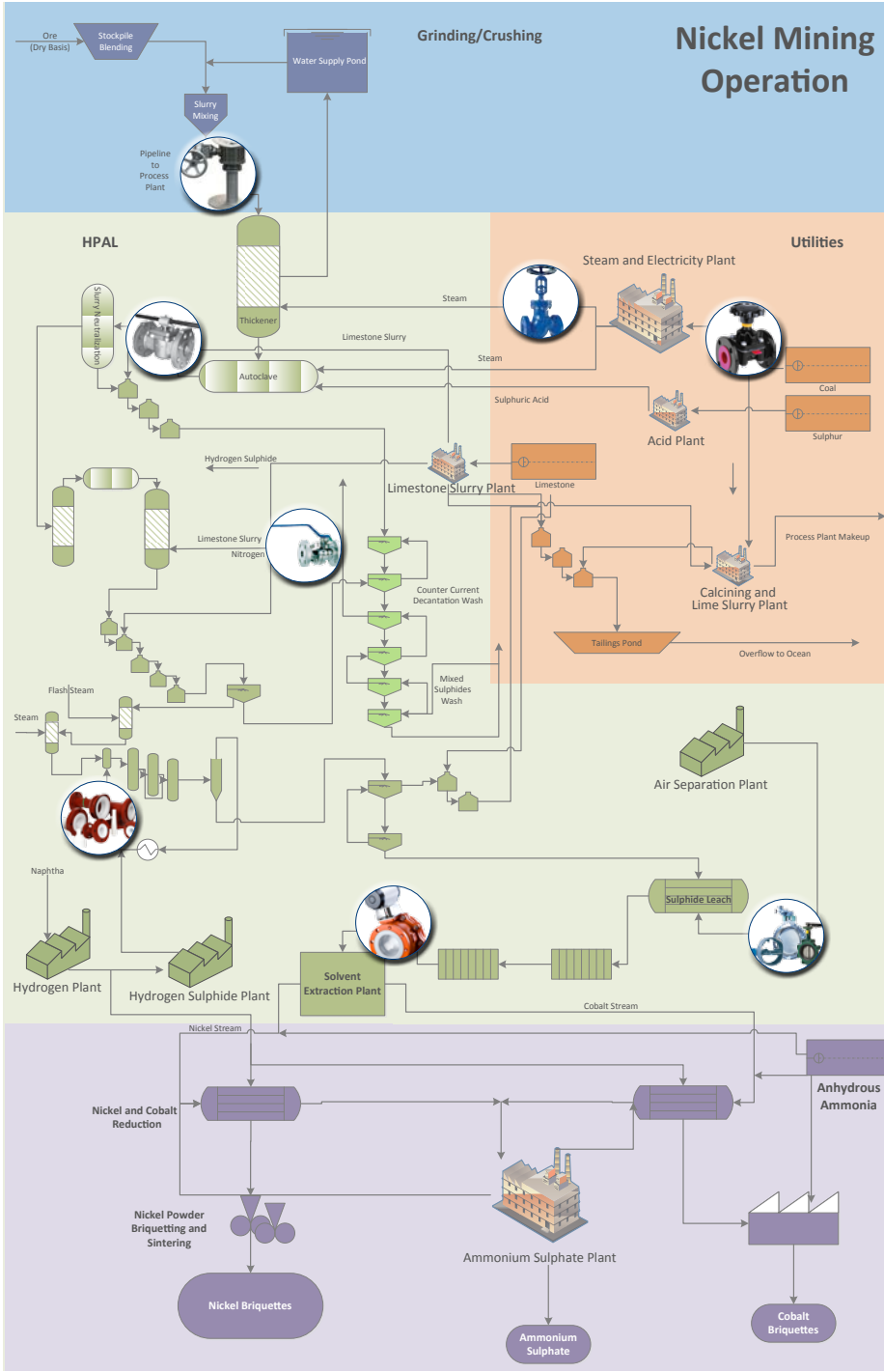
## Applications Include:

- Abrasive and Acidic Slurries
- Mill Feed
- Flotation
- Autoclave inlet/outlet
- Methylcellulose
- Sulfuric Acid
- Hydrochloric Acid
- Tailings
- Electrolyte Solutions
- Metal Powder
- Metal Ore
- Pregnant Leach
- CCD Wash
- Dry Powders
- Cooling and Process Water
- Steam
- Aeration and Blower Air
- Vent Gas
- Coal Powder



CRANE products can be found in over 500 Mining sites worldwide!

# Solutions for Mining and Mineral Processing



**Xomox® Sleeved Plug Valves**

- Positive tight shutoff
- Cavity-free
- Adjustable In-line seal



Typical Applications: HPAL autoclaves and corrosive environments.

**Saunders® Diaphragm Valve**

- Operating mechanism separated from line media
- Exceeds ANSI Class VI
- In-line reparability



Typical Applications: abrasive and corrosive slurries, and utilities.

**Center Line®, Krombach® and Xomox® Butterfly Valves**

- Resilient seated, double, and triple offset available
- Excellent in-line seal, and dead end service



Typical Applications: slurries, abrasive media, and utilities.

**Krombach® Bottom-Discharge Metal Seated Ball Valves**

- Ideal for abrasive applications



Typical Applications: slurries, powders, dry or fluid, coal powder, methylcellulose, metal ore, metal powder, among others.

# CRANE®

Crane ChemPharma & Energy

4526 Research Forest Drive, Suite 400

The Woodlands, Texas 77381 U.S.A.

Tel.: (1) 936-271-6500

Fax.: (1) 936-271-6510

Email: [Mining\\_info@cranechempharma.com](mailto:Mining_info@cranechempharma.com)

[www.cranecpe.com](http://www.cranecpe.com)

4444 Cooper Road

Cincinnati, Ohio 45242

Tel.: +1 513 745 6000

Fax.: +1 513 745 6086



COMPAC-NOZ®

CRANE®

DEPA®

ELRO® DUO-CHEK®



KROMBACH  
ARMATUREN

NOZ-CHEK®



RESISTOFLEX®



Saunders®  
the science inside

STOCKHAM®



UNI-CHEK®

W.ta.®

XOMOX®

CPE-SOLUTIONS\_MINING-BU-EN-LT-2017\_04\_18

Crane Co., and its subsidiaries cannot accept responsibility for possible errors in catalogues, brochures, other printed materials, and website information. Crane Co. reserves the right to alter its products without notice, including products already on order provided that such alteration can be made without changes being necessary in specifications already agreed. All trademarks in this material are property of the Crane Co. or its subsidiaries. The Crane and Crane brands logotype, in alphabetical order, (ALOYCO®, CENTER LINE®, COMPAC-NOZ®, CRANE®, DEPA®, DUO-CHEK®, ELRO®, FLOWSEAL®, JENKINS®, KROMBACH®, NOZ-CHEK®, PACIFIC VALVES®, RESISTOFLEX®, REVO®, SAUNDERS®, STOCKHAM®, TRIANGLE®, UNI-CHEK®, WTA®, and XOMOX®) are registered trademarks of Crane Co. All rights reserved.